

Instructions on importing the Nautical Generic style sheet.

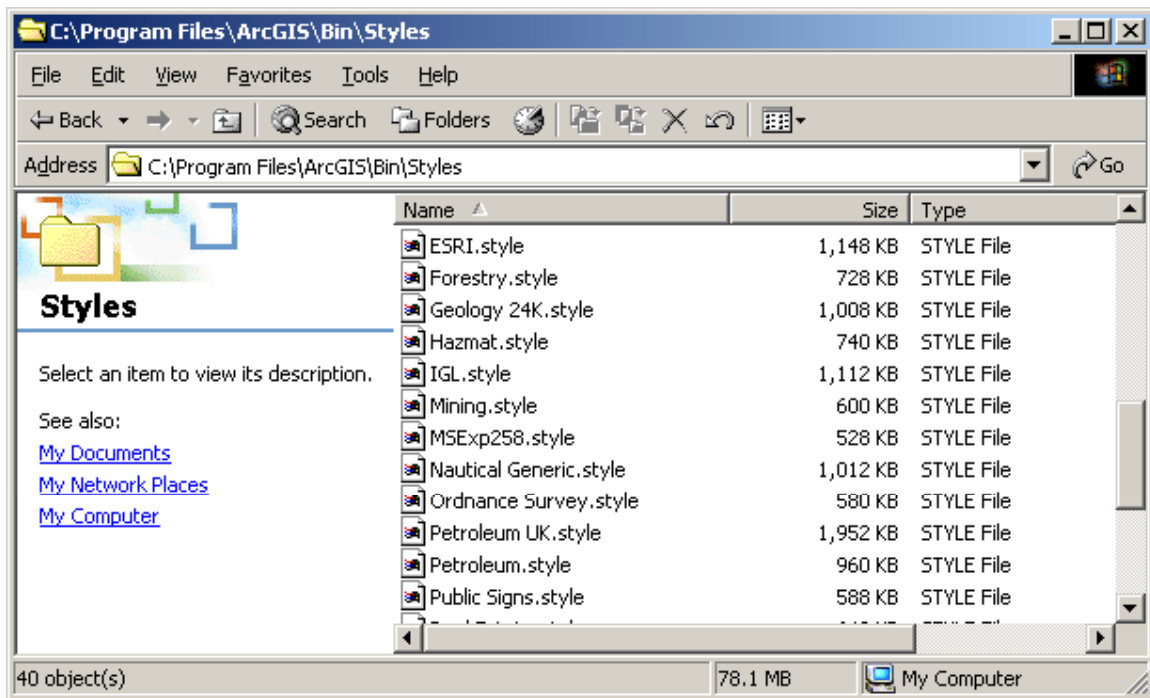
Depending on what version of ArcGIS you have installed, you will need to put the style sheet in the Bin\Styles folder. The path differs slightly between 8.3 and 9.0.

For ArcGIS 8.3 (and earlier) place the nautical generic style sheet at this path:
(assuming, for this example, that you have ArcGIS installed on your C drive)

C:\arcgis\arcexe83\Bin\Styles

For ArcGIS 9.0 place the nautical generic style sheet at this path:

C:\Program Files\ArcGIS\Bin\Styles



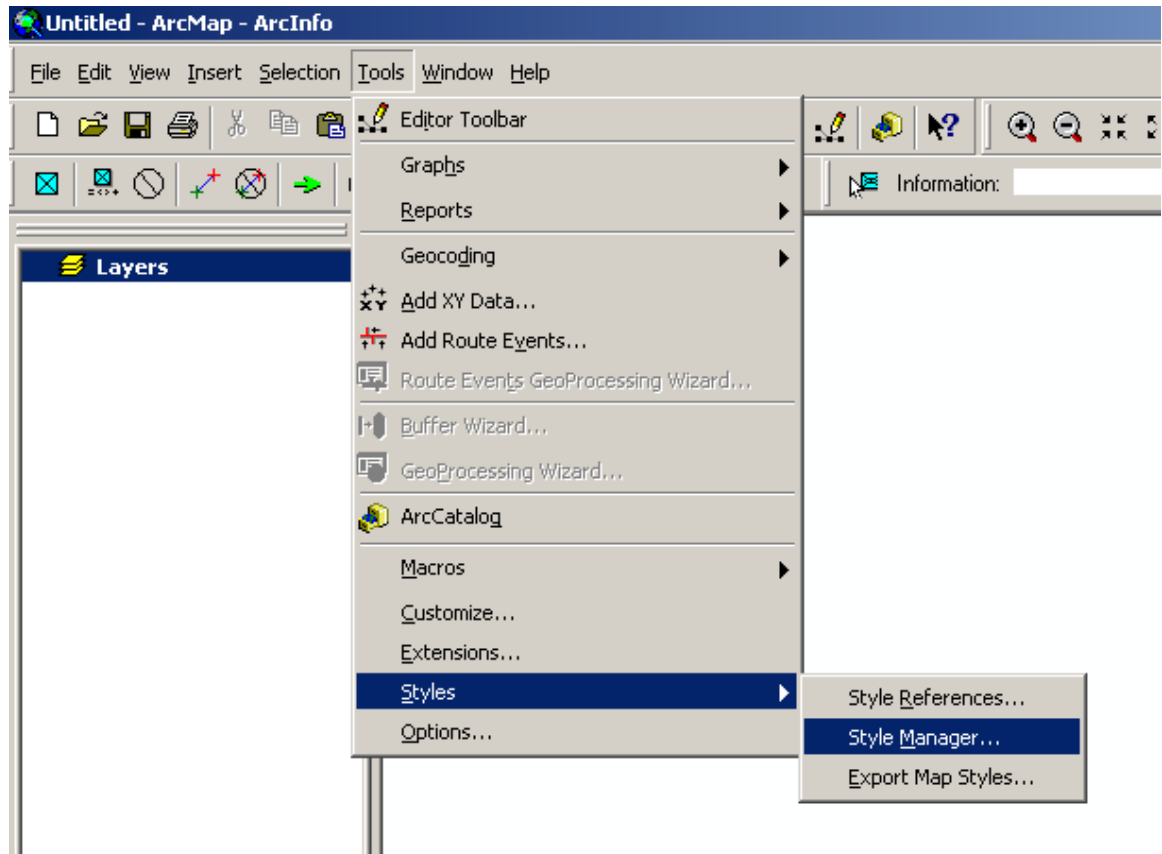
Load the Nautical Generic style into the Style Manager within ArcGIS:

Open ArcMap

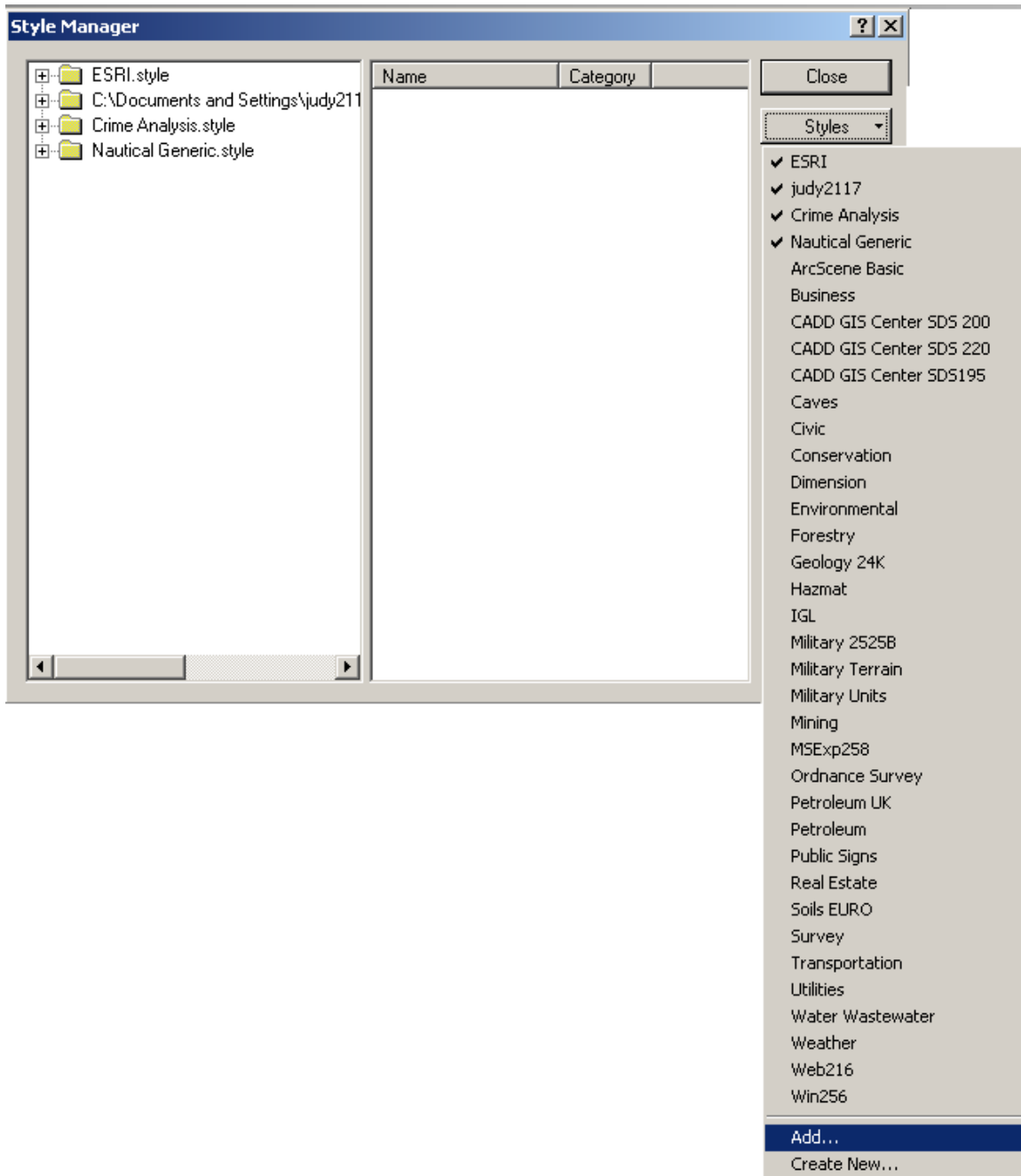
Start > Programs > ArcGIS > ArcMap

Open the Style Manager

Tools > Styles > Style Manager

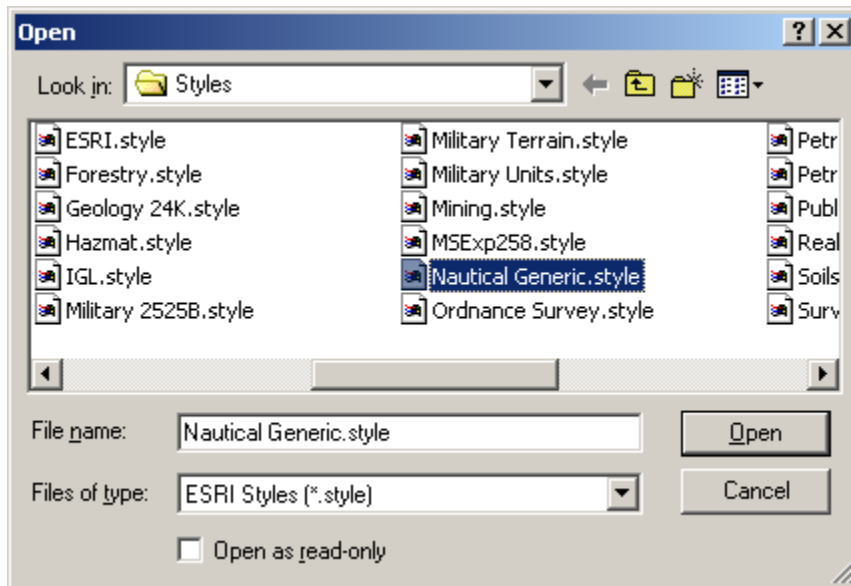


Add a new style to the Style Manager
Styles > Add



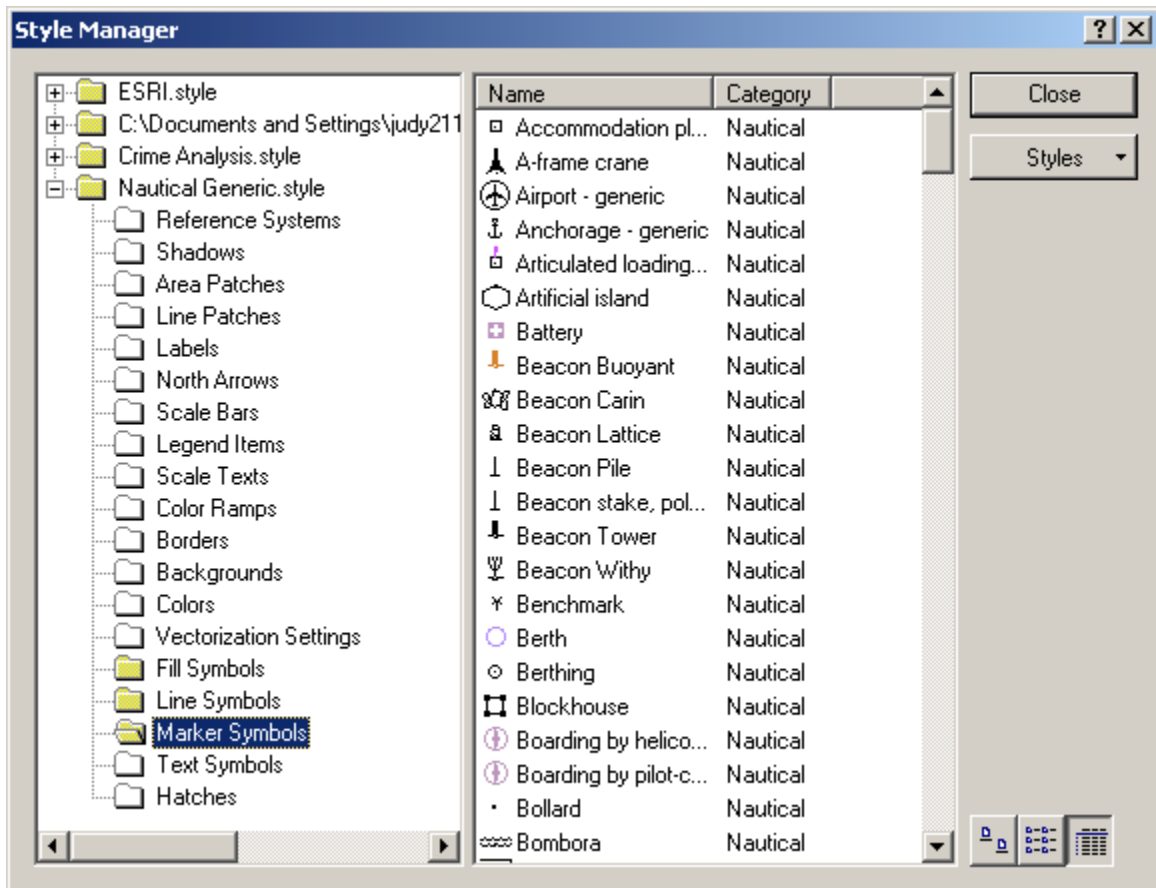
Browse to the style to add it to the Style Manager

Click on the Nautical Generic.style to highlight it and choose Open



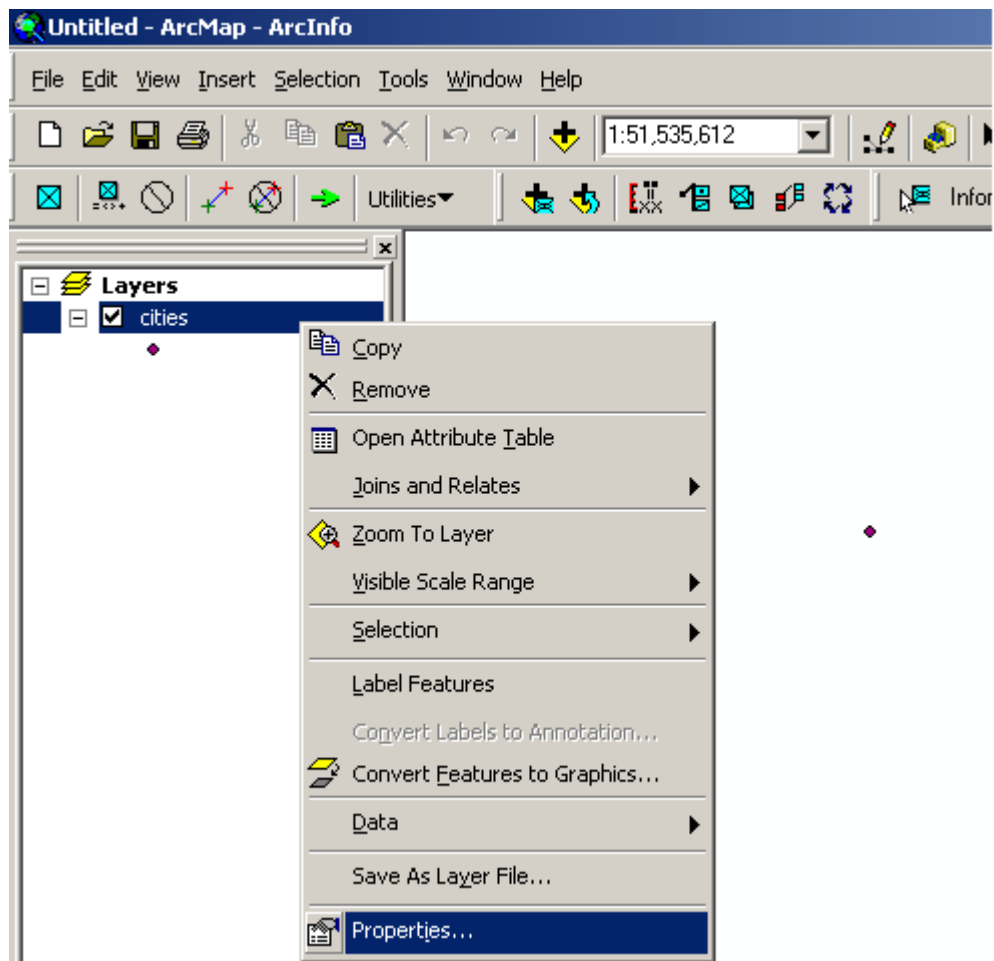
It should now be in the Table of Contents (TOC) on the left side of the Style Manager. If it is not, choose the Styles pull down and select the Nautical Generic style. You will see a checkmark next to each style that is added to the TOC.

Open the tree view by clicking on the plus sign next to the Nautical Generic folder in the TOC. Towards the bottom there will be three folders named Fill Symbols, Line Symbols, and Marker Symbols. Click on the Marker Symbols folder. You will now see the full list of generic Nautical marker symbols available from this specific style.



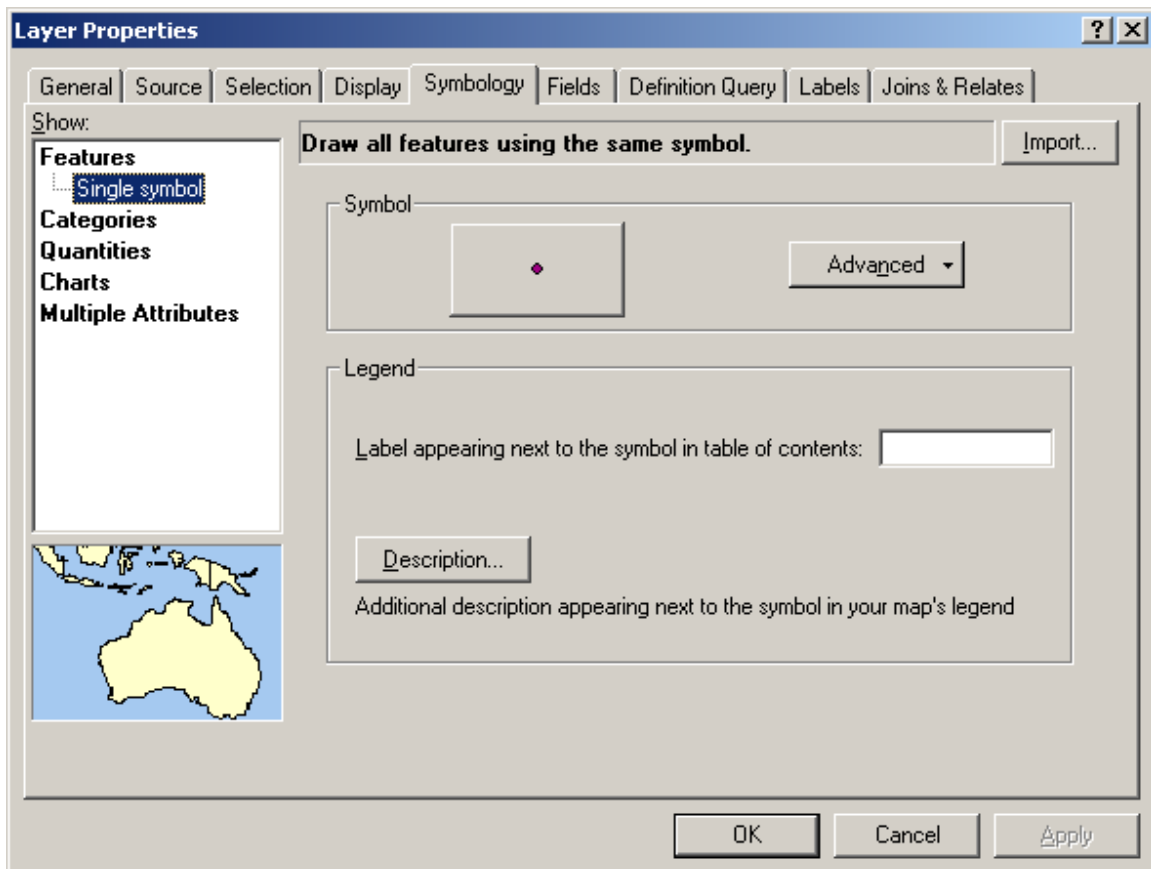
To symbolize a specific point, line or polygon feature.

Right click on the feature class that you would like to symbolize and choose properties



Select the Symbology tab

Under Symbol, click on the large button with the symbol type (in this case the point, or marker symbol)



The Symbol Selector dialog box now appears.

Select the Nautical style from the Category pull down.

You will now see all of the marker nautical symbols appear in the category table of contents.

Select the symbol you want, by clicking on it to highlight it, and click Ok.

Click Ok again to dismiss the Layer Properties dialog box. Your symbols within that feature class will now be symbolized with your newly selected symbol.

